

# Mouse Band Guitar Player

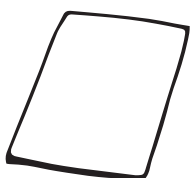


TAILI WU IS A TAIWAN BORN, NEW YORK BASED ARTIST WITH A PASSION FOR PLAYFUL DESIGN AND TACTILE ILLUSTRATION.

THIS ACTIVITY WAS CREATED INSPIRED BY TAILI'S PIECES IN THE RED ENVELOPE SHOW AT THE CHINESE AMERICAN MUSEUM. JOIN US AND MAKE YOUR OWN GUITAR PLAYER!

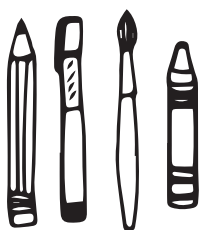


## TOOLS & MATERIALS



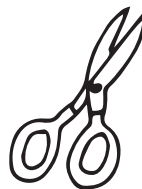
PAPER

THICK PAPER WORKS BEST FOR LONG TERM PLAY.  
(CARD STOCK OR MATTE PHOTO PAPER).



COLORING SUPPLIES

COLORLED PENCILS, COLORED PENS, PIGMENTS & BRUSH, CRAYONS.  
(RECOMMENDED SUPPLIES)



SCISSORS



GLUE



SEWING THREAD  
+  
SEWING NEEDLE



OR  
MINI BRADS  
(PAPER FASTENER)

\* ONE OR THE OTHER MAY BE USED FOR THE JOINTS.



CHINESE  
AMERICAN  
MUSEUM

IG @CAMLAORG  
FB @ChineseAmericanMuseum

ILLUSTRATOR: TAILI WU  
IG @TAILIIWU

# INSTRUCTIONS

A.



PRINT

COLORED  
VERSION



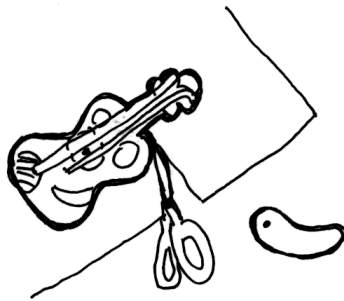
GO TO STEP B.

OUTLINED  
VERSION



COLOR YOUR GUITAR PLAYER  
WITH A COOL OUTFIT. THEN  
GO TO STEP B.

B.



CUT OUT

CUT OUT: CUT OUT THE PIECES  
ALONG THE THICK BLACK OUTLINE.



**TIP!** THE ARM IS AN  
ADVANCED ELEMENT FOR  
CUTTING. FIRST CUT A  
BIGGER AREA, THEN TRIM  
THE SMALL EXCESS.

C.



POKE LITTLE HOLES

POKE HOLES THROUGH THE DOTS  
NEXT TO THE NUMBERS ①-⑦.

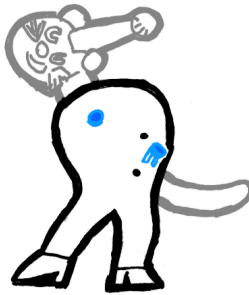
# INSTRUCTIONS

## USING MINI BRADS (PAPER FASTENERS)

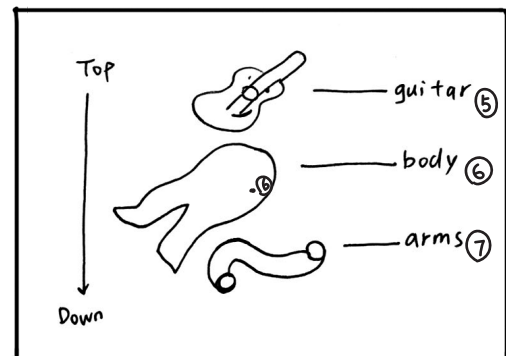
D - 1



1. PLACE BODY IN FRONT OF HEAD AND NECK PIECE, AND ALIGN HOLES ① AND ②. USE A MINI BRAD TO CONNECT JOINT.



2. PLACE BODY IN FRONT OF TAIL AND ALIGN HOLES ③ AND ④. USE A MINI BRAD TO CONNECT JOINT.



3. FOLLOW DIAGRAM TO PLACE GUITAR IN FRONT OF BODY AND ARMS BEHIND BODY. USE MINI BRAD TO CONNECT JOINTS.

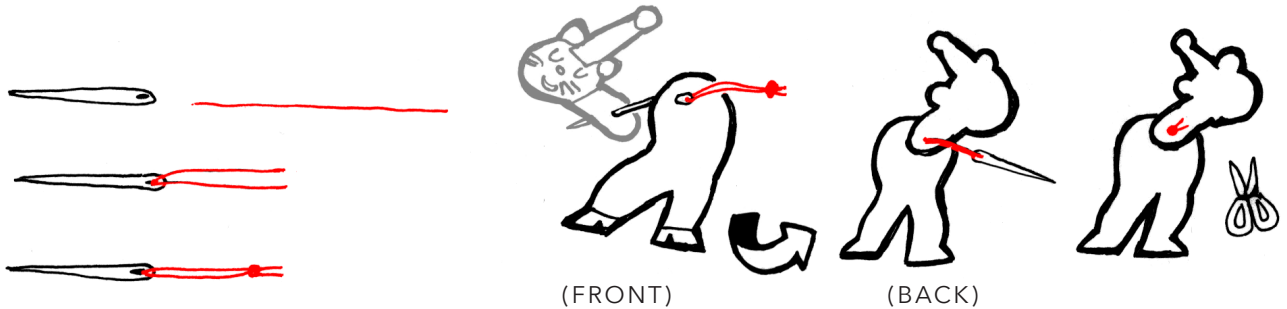


4. GLUE THE ARM. MOVE BOTH HANDS TO THE FRONT OF THE GUITAR. APPLY SOME GLUE TO THE GLUE TAB AND PLACE THE RIGHT HAND ON TOP OF THE GLUE TO ADHERE.

# INSTRUCTIONS

## USING SEWING NEEDLE & THREAD

D - 2

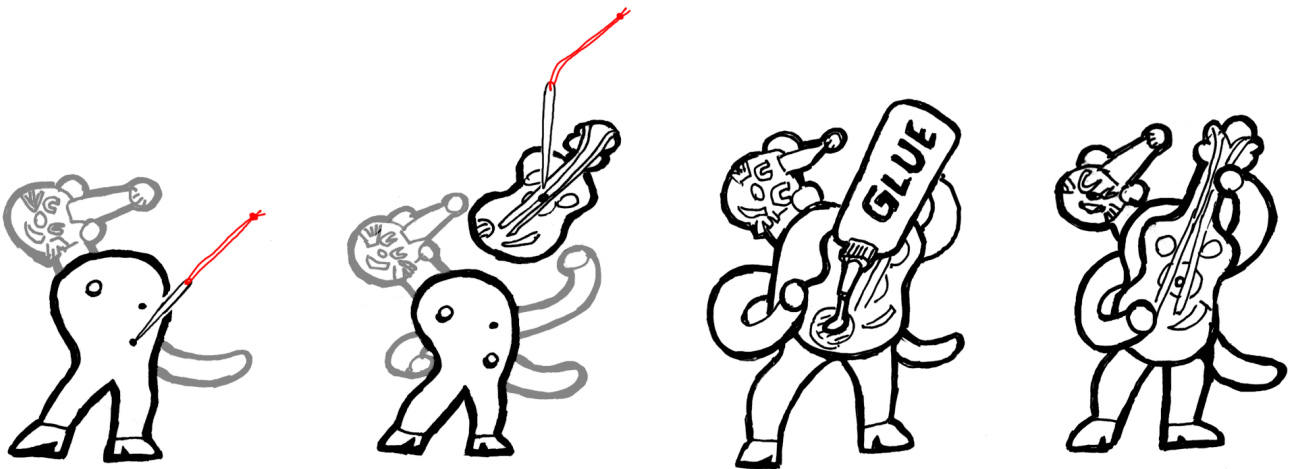


1. CUT A 10 INCH LENGTH OF THREAD, THREAD THE NEEDLE AND KNOTS AT THE END.  
(MAKE MULTIPLE KNOTS SO THE KNOT IS THICKER THAN THE NEEDLE)

2. PLACE BODY IN FRONT OF HEAD AND NECK PIECE AND ALIGN HOLES ① AND ②.

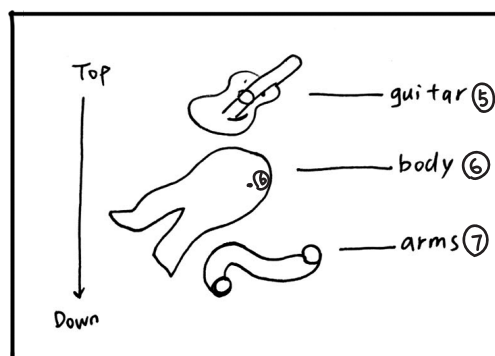
4. FLIP PUPPET AND TIE A FEW KNOTS IN THE BACK TO TIGHTLY SECURE JOINT. TRIM EXCESS THREAD.

3. SEW THRU THE HOLES FROM FRONT TO BACK.



5. RETIE KNOTS AT THE END OF YOUR NEEDLE AND THREAD TO USE FOR THE NEXT JOINT.

6. PLACE BODY IN FRONT OF TAIL AND ALIGN HOLES ③ AND ④. FOLLOW STEPS 3-5

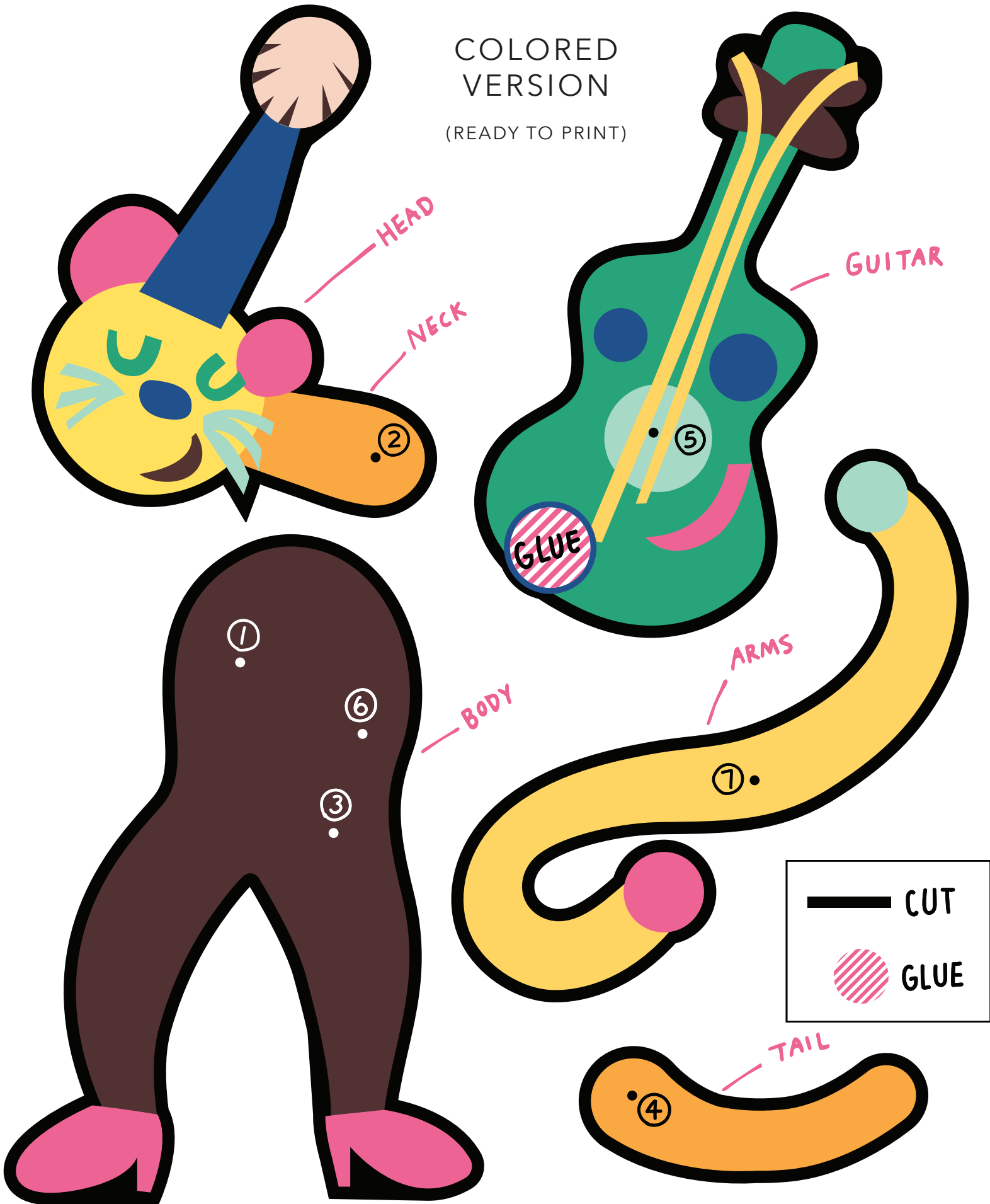


7. FOLLOW DIAGRAM TO PLACE GUITAR IN FRONT OF BODY AND ARMS BEHIND BODY. FOLLOW STEPS 3-4.

8. GLUE THE ARM. MOVE BOTH HANDS TO THE FRONT OF THE GUITAR. APPLY SOME GLUE TO THE GLUE TAB AND PLACE THE RIGHT HAND ON TOP OF THE GLUE TO ADHERE.

# COLORED VERSION

(READY TO PRINT)



# OUTLINED VERSION

(COLOR ME!)

